

University of Greenwich

Director of Strategic
Planning & Business
Intelligence

Contents

Great things about the University of Greenwich	3
University income 2018–19	4
Our staff 2018–19	4
Our teaching	5
Our research	7
Examples of our research	8
Our faculties	9
Faculty of Liberal Arts & Sciences	9
Business School	9
Faculty of Education, Health & Human Sciences	10
Faculty of Engineering & Science	10
About the university	11
Our rich past	11
Our mission, our values and our strategy	11
Our structure	13
Our campuses	14
Greenwich Campus	14
Avery Hill Campus	14
Medway Campus	14
Director of Strategic Planning & Business Intelligence	16
The Role	16
Key Accountabilities	16
Core Requirements	17
Personal Specification	17
How to apply	19

Great things about the University of Greenwich

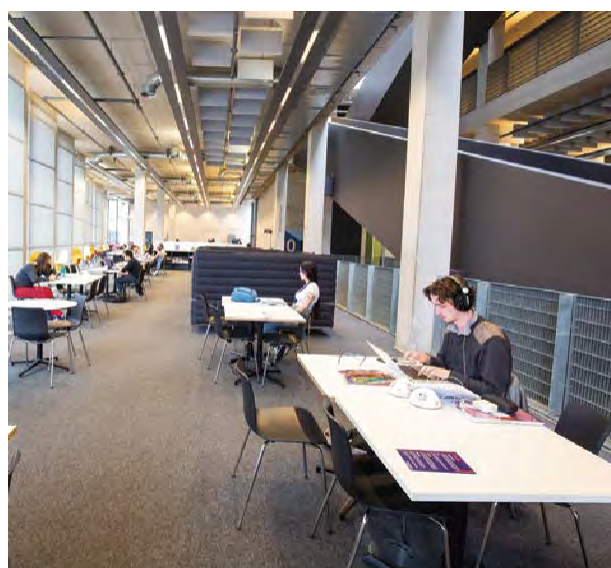
- We have more than 125 years of experience providing quality education.
 - We have won five Queen's Anniversary Prizes for Higher and Further Education, including a prize in 2019 for our Natural Resources Institute's ground-breaking work to find smart solutions for pest control in the developing world.
 - Our Greenwich Campus is based on a UNESCO World Heritage Site, and we are custodian of 16 listed buildings of special architectural or historic interest.
 - 90% of our students are in employment or further study six months after graduation.
 - In the 2019 National Student Survey, more than 82% of our final-year undergraduate students said they were satisfied, overall, with their course, one of the highest scores among universities in London.
 - We have won nine Times Higher Education awards, including Most Innovative Teacher and Outstanding Contribution to Innovation and Technology.
 - Nobel Prize winner Professor Charles Kao, pioneer of fibre optics, was educated here.
 - Our Teaching Excellence Framework Silver rating indicates that we provide our students with engaging, personalised teaching that encourages their commitment to learning and study.
 - Our academic staff includes recipients of the prestigious National Teaching Fellowship, which recognises and rewards individual excellence in teaching in higher education.
 - Ofsted has given us its 'Outstanding' rating for the quality of our training in primary education.
 - Two of the recent winners of the British Journal of Midwifery's Student Midwife of the Year award have come from the University of Greenwich.
- The university has two Guardian University Awards for Research Impact. Guardian University Awards showcase world-class teaching, research, leadership and engagement within the higher education sector.
- Life-saving research carried out by the university includes projects to reduce loss of life during fire evacuations and to develop a trap for a malaria-carrying species of mosquito.
 - Our alumni excel in every walk of life. They range from lawyer Shabina Begum, a campaigner for the empowerment and protection of women, to composer Guy Penwill, a member of a double Oscar-winning special effects team, and Abiy Ahmed, Prime Minister of Ethiopia and winner of the 2019 Nobel Peace Prize. Our annual Greenwich Portraits exhibition recognises some of our most outstanding alumni.
 - We are proud of the diversity of our international student body and our engagement in transnational education. The university has around 15,000 students in ca.31 partnerships across 19 countries. Our UK-based students come from more than 146 countries, and in 2018–19 22% were domiciled from outside the UK. In 2018, we established the University of Greenwich International College (UGIC) in partnership with Oxford International. Located on our Greenwich Campus, UGIC is an embedded college which offers an exciting range of undergraduate and postgraduate courses for international students leading to progression to the university.
 - We've a 1st class environment rating from the People & Planet University League for our environmental and ethical performance.
 - The university is well positioned for attracting students. QS Best Student Cities ranked London as the world's most student-friendly city in its 2018 edition.
 - Improvements in our student experience include Dreadnought Building, a £25 million conversion which brings together all student-facing services on Greenwich Campus in one place for the first time; the Medway Student Hub, a new on-campus entertainment and social space; our award-winning Stockwell Street Building, which houses the main library; and the Cooper Powerhouse, a research, enterprise and teaching hub supporting student entrepreneurship.



Dreadnought Building



Medway Student Hub



Stockwell Street Building

University income 2018–19

	(£'000)
Tuition fees and education contracts	143,223
Funding body grants	20,084
Research grants and contracts	14,071
Other income	31,776
Investment income	584
Donations and endowments	124
Total income	209,862

Our students 2018–19

	Total
Total studying in the UK	18,944
Students studying wholly overseas	15,156
Total students	34,100

UK-based students

Level of study	% of total
Undergraduate	76%
Postgraduate	24%

Mode of study	% of total
Full-time	75%
Part-time	25%

Age group	% of total
Under 21	35%
21–24	31%
25–29	12%
30–39	12%
Over 39	10%

Gender	% of total
Male	41%
Female	59%

Domicile region	% of total
UK	78%
EU	8%
Overseas	14%

Ethnicity	% of total
BME	52%
White	46%
Not given	2%

Our staff 2018–19

Staff	Total
Academic and research	1,020
Administrative and technical support	1,111
Premises	28
Technical	17
Total	2,176

Our teaching

Our graduates go out into the world with strong knowledge of their subject, an ability to apply that knowledge in practice and determination and resilience to succeed.

Our teaching focuses on employability, ensuring students gain the skills and understanding they need to launch successful careers or take their professions to the next level. Students use industry-standard equipment on campus and gain further hands-on experience through relevant work placements.

The leading professional bodies accredit many of our courses, and this also boosts students' careers.

Much of our teaching is informed by research and many of our tutors are leading experts in their fields. This means that teaching is illuminated by real-life examples that engage and inspire our students.

We've had many acknowledgements of the quality of our teaching. We were proud to receive a Silver rating in the Teaching Excellence Framework, and Ofsted has rated our primary education training as 'outstanding'.

90% of our graduates are in work or further study within six months of completing their course. The proportion of UK-domiciled full-time undergraduate students achieving a graduate outcome (i.e. a graduate-level job or postgraduate-level study) increased from 48.9% for students graduating in 2012-13 to 70.2% for 2016-17 graduates.

We continue to invest in new and existing staff to ensure that they are highly qualified and effective educators. Staff members frequently win national teaching awards, including HEA National Teaching Fellowships, which recognise excellence in higher education teaching.

We have long had an international outlook. This is reflected in the large number of international students that join us each year and the topics they study and research. Many of our students' study in their own countries through our international partners.



Throughout my time at Greenwich, the lecturers have been amazingly dedicated, providing us with a high level of education and support. My personal tutor in particular is always available to support me with any of my concerns.

Loretta Tanor

Childhood and youth studies student

Staff gave me a lot of help and advice, including mock interviews, which really helped... and I have a placement lined up next year.

Josh Watkins

Business management student

Studying biology at the University of Greenwich has been one of the best experiences that I've had. I'm in both labs and lectures; it's so varied, which I find very appealing. I've learned so much and I want to apply my knowledge to help people first-hand as a GP.

Sophie Hygate

Biology student

The strong focus on employment opportunities really gave me the chance to make an informed decision on what area of law really suited me.

Natalie Schroeder

Law student

The course content was relevant to industry and up to date with technology and software tools. It equipped students with the necessary skills and knowledge for the current market.

Bobby Manoo

Computing student

My course leader was a fingerprint expert. Having a person like that teaching me, someone who trained forensic scientists in the Metropolitan Police, was just amazing.

Martin Sanchez Horna

Forensic genetics student

I didn't know the university would be such a friendly, relaxed place and so geared towards teaching. The lecturers aren't doing it just as a job. They're doing it as a passion.

Paul Wolfe

Primary education student

Greenwich was my first choice as it had a reputation for high-quality teaching with research, as well as diverse statutory, voluntary and private-sector placement opportunities. From the moment I embarked on the course, I have not been disappointed.

Mikhail Mohammed

Social work student

I like all the practical work we do. I'm not sure I'd have been able to ask so many questions or work so closely with lab assistants at another university. All the group work and lab practicals are helping me discover more about myself.

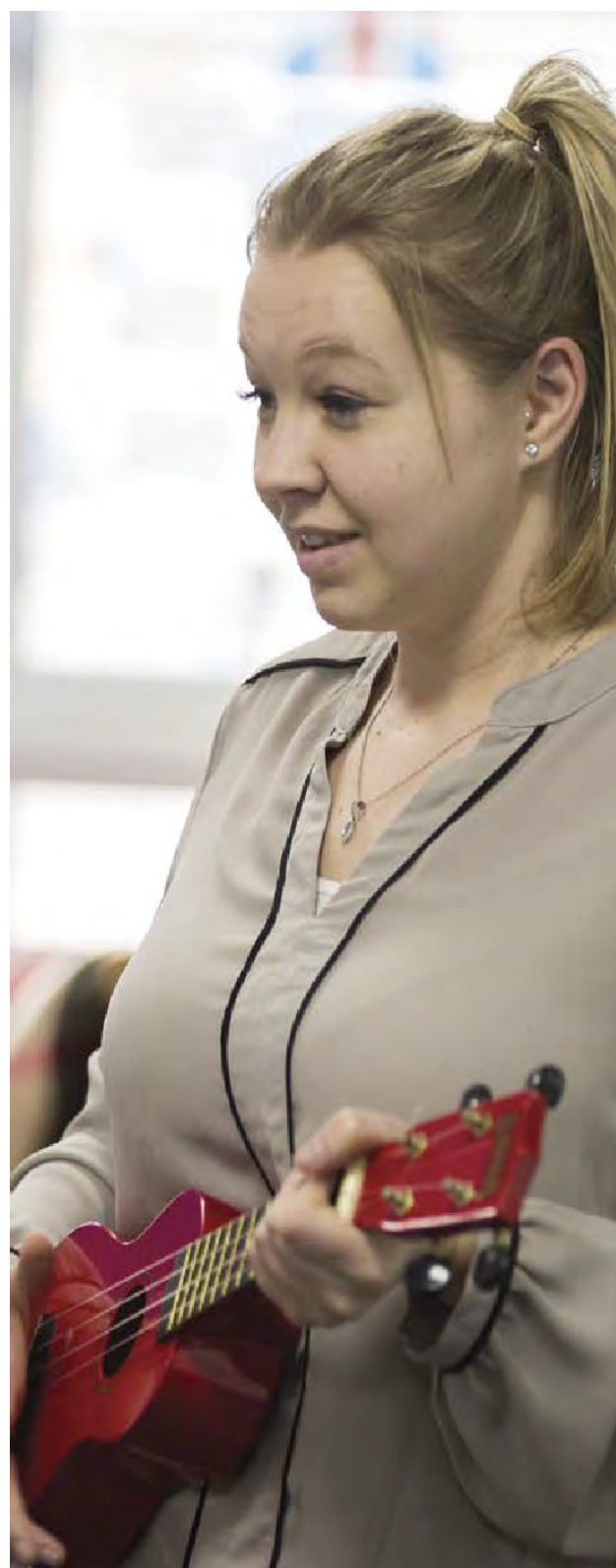
Rafiq Hamas

Mechanical engineering student

The staff have plenty of time for their students and genuinely love their subjects, which is reflected in their teaching.

Megan Rowlands

History student



Our research

For more than a century, our research has brought solutions to governments, charities, industry and other partners, both in the UK and overseas. Our contribution has been particularly important in fields such as computer modelling, fire safety, health care, pharmaceuticals and sustainable development.

In 2018–19, we had £22.6 million in research and enterprise income, our largest ever. Our research has brought us a series of national awards, including our fifth Queen's Anniversary Prize for Higher and Further Education in 2019.

Our vibrant research and enterprise culture informs our teaching, benefits the community and society, and enriches the creativity and innovation of our staff. We nurture emerging research talent through a growing network of postgraduate and early career researchers.

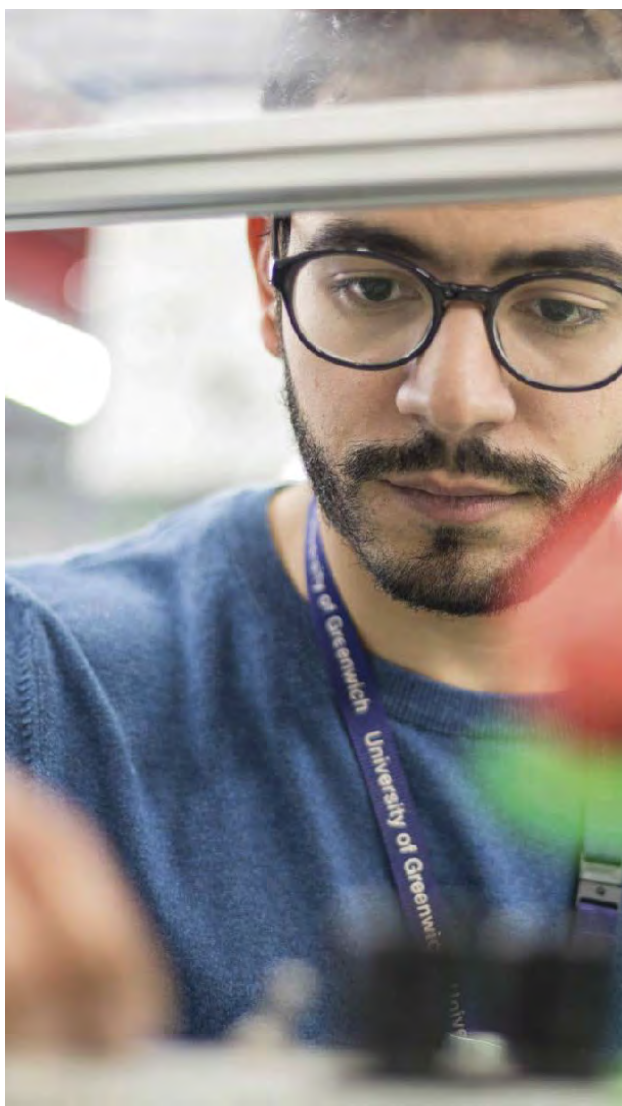
The university is currently preparing for REF2021, the latest research assessment exercise for determining the quality of research in UK higher education institutions.



Staff have submitted more than 1,500 research outputs for REF2021 preparation assessments. Of these, over 900 are deemed to be 3*/4* quality (research that is internationally excellent or world leading).

Examples of our research

- A breakthrough made by our Natural Resources Institute (NRI) was named as one of the ten most important discoveries to be made in a UK university over the past 60 years. A Universities UK poll of academics recognised NRI's work in controlling the tsetse fly in Africa, which is helping to combat the fatal disease sleeping sickness.
- A university research project is exploring how smart technology can encourage people to discover and engage with Europe's shared cultural heritage.
- Researchers are developing a new approach to teaching children with dyslexia, using 3D gaming to aid reading by increasing pupil engagement. This research builds on work that has shown that 3D environments can be effective in areas relating to autism, managing learning difficulties and cognitive impairments.



The Fire Safety Engineering Group, led by Professor Ed Galea, has won Guardian Research and Times Higher awards for its work on evacuation signage.

- Dr Jennifer Guest, senior lecturer in forensic science, is adapting a medical training device to recreate distinctive bloodstain patterns from arterial injuries. This could provide a greater understanding of blood behaviour and become an important tool for solving crime.
- Research carried out by NRI and the Produce Quality Centre suggests that an edible coating for fruit and vegetables could be an environmentally friendly alternative to traditional plastic packaging. Early research suggests that coating may improve product quality and increase shelf life by delaying the ripening process.
- Experts are looking into the destruction and disease caused by rats in Africa. They can destroy field crops, eat and contaminate stored food and spread serious diseases. They can even cause house and farm fires by nibbling through electrical cables.
- The Faculty of Education, Health & Human Sciences has joined forces with the Metropolitan Police to explore the rise in criminal gangs in London who are sending young people into small market and coastal towns to sell drugs.
- The 'Cost of the Diet' method and software has been designed by University of Greenwich experts to understand how poverty affects food choices. The aim is to inform programme design and open up debate in the fields of nutrition, food security, livelihoods and social protection.
- Carbon8 Systems, a University of Greenwich spin-out company, is using innovative green technology to help reduce greenhouse gas emissions. The process locks carbon dioxide into industrial waste to create carbon-negative materials for building projects.

Our faculties

Faculty of Liberal Arts & Sciences

The Faculty of Liberal Arts & Sciences covers a broad range of disciplines, including architecture, landscape architecture and the built environment; computer science, computing, mathematics and games and digital media; humanities and social sciences; law and criminology; and media and creative arts.

The historic Greenwich Campus and its proximity to London's galleries, museums and theatres are a major draw for our students, including those studying literature, history and creative writing.

Among our impressive facilities are industry-ready computer labs and video and film-making studios. The 100-seat Bathway Theatre in south-east London provides a venue for our drama students to put their learning into practice.

Many of the faculty's courses are accredited by the relevant professional bodies, ensuring that students graduate with the skills and knowledge required by their chosen professions.

Business School

The Business School has an international focus that fits perfectly with today's global economy. It offers dynamic courses that combine academic learning with hands-on experience, preparing students for successful business careers and leadership roles. A major benefit of studying at the Business School is its location. Greenwich Campus is within easy reach of Canary Wharf, one of the world's key financial districts and a major provider of business internships, work experience and placements.

Students choose from a wide variety of courses, including MBAs and research degrees. Subjects include accountancy and finance, business studies, economics, financial services, international marketing and personnel management. The school works with employers to develop courses that are accredited by the relevant professional bodies.



Faculty of Education, Health & Human Sciences

For more than 100 years, the Faculty of Education, Health & Human Sciences has provided high-quality education in a wide range of careers.

Many of our students go on to become teachers, nurses, midwives, paramedics, social workers, psychologists and public health professionals, or find other rewarding careers that also bring real benefits to society.

We focus on giving students the skills they need to start or grow their careers and meet the requirements of the relevant professional bodies.

Our teaching and research facilities are excellent, from clinical skill laboratories that replicate NHS wards to innovative facilities for learning to teach PE, design technology, music and science. Our tutors are active in research and leading authorities in their fields.

Faculty of Engineering & Science

From its base on the university's Medway Campus, the Faculty of Engineering & Science provides students with research-informed teaching supported by industry-standard labs and IT facilities.

The faculty has a strong background in research, with its academic disciplines of engineering, science and pharmacy delivering life-saving innovations in the UK and around the globe.

The faculty includes the Natural Resources Institute, a multidisciplinary organisation that provides award-winning research in areas such as food, agriculture and the environment.

Students study a wide range of subjects, from cybernetics and electrical and electronic engineering to pharmaceutical, chemical and environmental sciences. Leading professional bodies accredit over half of the faculty's courses.



About the university

Our rich past

The university takes its name from the Royal Borough of Greenwich in London. Greenwich has a long and rich history which forms the backdrop and inspiration for today's university. Many of the buildings on Greenwich Campus were designed at the end of the 17th century by Sir Christopher Wren, one of Britain's greatest architects, and the work was overseen by Nicholas Hawksmoor and Sir John Vanbrugh, both towering figures in their field.

The £76 million Stockwell Street Building continues this tradition of innovative architecture within the Maritime Greenwich World Heritage Site.

Altogether, the university is custodian of 16 listed buildings, including the grand former Royal Naval Barracks at Chatham Maritime, now home to the Medway Campus, and Sir Colonel North's elegant listed Winter Garden at Avery Hill.

Our mission, our values and our strategy

We are proud of our achievements as an educational institution which provides opportunities for people of potential, regardless of background, and which enhances society through research and enterprise. This pride is coupled with a commitment to excellence in all that we do.

Greenwich's mission is *Transforming lives through inspiring teaching and research*. This is founded on our core values of ambition, creativity, determination, excellence and inclusivity.

Reflecting our mission, our Strategic Plan sets the following objectives for the period 2017–2022. We will transform lives by:

- Changing student lives through outstanding teaching and learning;
-

Enhancing science and society through inspiring research and enterprise;

- Delivering a high-quality university experience through engaging campus environments and services;
- Supporting and developing our staff so that they can reach their full potential and maximise their contribution;
- Enhancing student employability
- to optimise prospects for graduate employment and further study;
- Internationalising Greenwich so that we take our place in a global society; and
- Embedding our values in all that we do.

We have made great strides in these areas, including a Silver award in the Teaching Excellence and Student Outcomes Framework (TEF), growth in our research and enterprise income and the quality of our research outputs, rising levels of graduate employment (90% of our graduates begin work or further study within six months of completing their course), and an investment of more than £150 million since 2013 in laboratories, teaching spaces and student facilities, including a Student Hub at Medway Campus and Dreadnought Building at Greenwich Campus.

We will know if we have succeeded in 2022 if:

- There is significant improvement in the quality of our teaching and learning, indicated by raising the current TEF Silver rating to Gold;
- A major increase in our research outcomes has been demonstrated by at least 150 full-time equivalent staff achieving world-leading/international quality (3*/4* level) outputs in the Research Excellence

Framework 2020/21

(it was 84 in the last REF in 2014);

- The performance of our support services in meeting the needs of our students and staff has improved as measured by three quarters of staff being engaged with our mission, and national student satisfaction being above the TEF benchmarks.

Governance

The University of Greenwich is a company limited by guarantee not having share capital and an 'exempt' charity under the Charities Act 2011. The members of our Governing Body are the university's company directors and charity trustees.

The Governing Body is responsible for the strategic direction of the university, approving our strategy and ensuring that it is fulfilled. Under the university's Articles of Association, the Governing Body comprises at least 12 Governors, including the Vice-Chancellor (serving ex officio); up to three Staff Governors; and a Student Governor nominated by the students (traditionally the President of the Students' Union). The remaining members are Independent Governors appointed from outside the university, who must always be a majority. The Chair and Vice-Chair are drawn from the Independent Governors. The Governing Body is supported in its work by major committees dealing with Audit and Risk, Finance, Nominations, Staffing and Remuneration, and by the university's Academic Council.

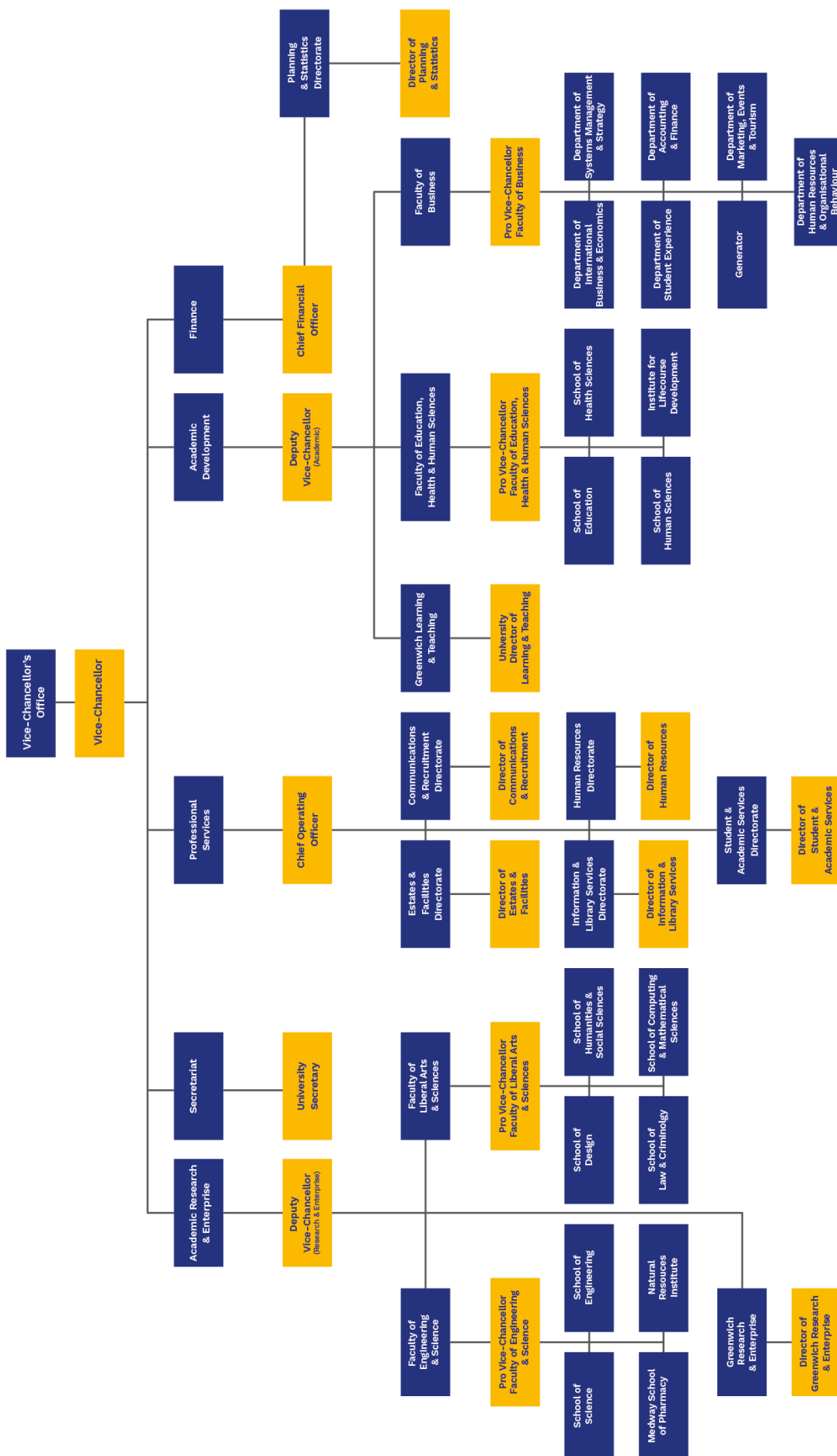
The Governing Body currently comprises 15 Members (plus two vacancies, one for an Independent Governor). The Chair, Ms Marianne Ismail, succeeded Stephen Howlett CBE as Chair in 2017 and retires from the Governing Body in July 2020 at the end of her final term of office.

The Governing Body works closely with the university's executive, the Vice-Chancellor's Group, comprising the Vice-Chancellor, Professor Jane Harrington; the Deputy Vice-Chancellor (Academic), Professor Karen Bryan; the Deputy Vice-Chancellor (Research & Enterprise), Professor Javier Bonet; the Director of Human Resources, Ms Gail Brindley; the Chief Financial Officer, Ms Louise Watson; the University Secretary, Mr Peter Garrod; the Interim Chief Operating Officer, Mr Peter Taylor; and the four Pro Vice-Chancellors, responsible for the strategic leadership of the university's four faculties. The University Secretary is responsible for governance and reports jointly to the Vice-Chancellor and to the Chair of the Governing Body.

An independent review in 2018 concluded that the standard of Greenwich's governance was good, with governors being committed and passionate about doing a thorough job, and that our governance processes, practices and policies were 'fit for purpose' and met current expectations for the higher education sector.



Our structure



Our campuses

Greenwich Campus

The university's largest campus is at the heart of a UNESCO World Heritage Site and centres on three magnificent 17th-century buildings designed by Sir Christopher Wren.

The campus is often recognised for its stunning setting. It features in Times Higher Education's 10 Most Beautiful Campuses in the UK and appears regularly as a backdrop on film and TV.

The past few years have seen major developments on the campus. In 2018, the university completed a £25 million conversion of Dreadnought Building. This former library is now a central hub for students, with a café, gym and facilities for the Students' Union. The building also provides a range of flexible, multi-purpose teaching spaces, as well as specialist teaching facilities for the Faculty of Education, Health & Human Sciences.

Our library facilities are now in our Stockwell Street Building. The building's contemporary design and imaginative use of space, which includes 14 roof gardens, have received many plaudits since it opened in 2014, including a RIBA London Award.

The campus is home to the Faculty of Liberal Arts & Sciences and the Business School. Part of the Faculty of Education, Health & Human Sciences is also based here. The campus's location, just across the river from Canary Wharf, is a major selling point for many of our students.

We offer a range of accommodation in and around Greenwich town centre, including halls set aside for postgraduate and mature students.

Avery Hill Campus

Avery Hill Campus combines the convenience of living in London with a relaxing atmosphere and attractive green spaces.

Although the campus is on the edge of 86 acres of parkland, it's just a short walk from Eltham High Street with its shops, restaurants and cafés. Central London is only 30 minutes away by train.

Avery Hill is home to part of the Faculty of Education, Health & Human Sciences, so student nurses, midwives, paramedics and teachers are well represented among the residents of our on-campus halls. These form part of an area known as the Student Village, which also features the Dome, a social space with a café and gym.

As well as plenty of classroom space, academic facilities include clinical skills labs. These resemble NHS wards and provide health students with realistic training in a safe environment.

The campus is a focus for university sport, and facilities include football and rugby pitches and netball courts. A £1.7 million investment in floodlit all-weather sports pitches means that matches can be played on campus. This is a rarity for London universities, where academic and sporting facilities can be far apart.

In 2020 we will commence a major redevelopment of the campus, linked to the planned sale of the Mansion Site part of the campus for use as a school.

Medway Campus

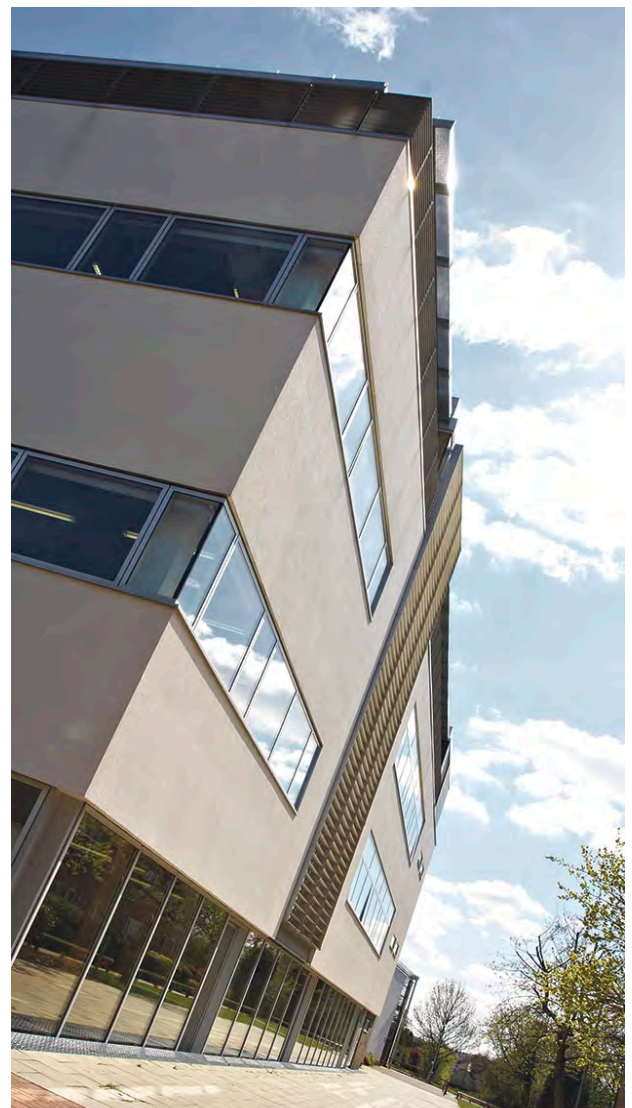
Medway Campus is located in Chatham Maritime, Kent, about 30 miles from central London. A former naval base, the campus is close to the River Medway and Chatham's Historic Dockyard.

The majority of students on campus study engineering or science degrees, but Medway also provides health courses in subjects such as speech and language therapy and paramedic science.

Medway School of Pharmacy, a partnership between the Universities of Greenwich and Kent, opened in 2004 to address the shortage of pharmacists in south-east England. The Natural Resources Institute attracts students from across the world and is a leader in food, agricultural and environmental research.

On-campus facilities include an extensive library, gym and a sports hall. The Deep End, a £5 million student centre with a café and bar, is a focal point for social activities on campus.

Five halls of residence enable students to get from their accommodation to lectures in only a few minutes. An inter-campus bus service links Medway with the university's other campuses.



Director of Strategic Planning & Business Intelligence

The role

The Director of Strategic Planning and Business Intelligence will lead the provision and development of business intelligence and management information to influence and inform key business decision making, organisational planning and performance. This will underpin organisational strategy and first-class student experience. This will involve working alongside key decision makers to explain and respond to insightful and focussed market intelligence, trends, and key performance indicators.

The post holder will lead the integrated business planning process, supporting the Vice Chancellor and senior leaders in developing strategic plans that align activities and resources against the University's strategy. They will also be the focal point for the provision of strategic management information, data governance and statutory return compliance. A critical part of the role will be to ensure statutory returns are completed error free and on time.

Key Accountabilities

Strategic Business Planning

- Lead on the development, implementation, monitoring and refining of a robust annual planning process which is integrated with student number planning and budget modelling, aligning University activities and resources to strategic plans

Support the Vice Chancellor and executive team in the implementation of the University strategic plans, including advice on reallocating resources and optimising the overall University portfolio

- Support the Vice Chancellor and executive team with strategy formulation and delivery through the provision of expert knowledge and analysis, relevant and timely management information, and university performance indicators
- Work with the Chief Financial Officer to facilitate evidence-driven institutional change to enhance performance and delivery of the University's Strategy and annual plans

Business Intelligence

- Lead and develop business intelligence, working with colleagues to understand and communicate data analysis, visualisations, predictive analytics, and other techniques to support decision making and the delivery of the University's strategy
- Take responsibility for the provision of management information across the University ensuring that any systems and processes necessary to achieve this are developed, maintained, published, reported, and used systematically to support institutional improvement and decision making
- Through careful data analysis, create unique perspectives on where likely opportunities will come from and, specifically, on what will be needed to take advantage of these
- Develop and refine the University's competitor analysis, market insight, horizon scanning and scenario planning capabilities to inform strategic direction, portfolio and decision making
- Scan the external environment (including, but not limited to the political, demographic, and regulatory environment) for trends and shocks that may create opportunities or risks for the University, undertake scenario planning and recommend responses

Statutory Compliance and Data Governance

- Oversee the preparation and accurate, timely submission of all the statutory strategic planning returns to external bodies which fall within the remit of the service, leading any changes required to comply with the HESA Data Futures and any new Office for Students requirements
- Lead the University's work on improving data management, with emphasis on data quality and consequential process improvement, data reporting and data governance
- Establish and shape a new effective and efficient service that can deliver major change projects within defined time periods

Leadership and Management

- Lead, motivate, develop, and manage the performance of the collective and individual members of the team, exercising responsibility for staff recruitment, appraisal, review, and career development
- Represent and promote the university on relevant regional, national, and international bodies and build effective relationships with external stakeholders including regulatory and funding bodies
- Take on roles and responsibilities across the university as required as a member of the University' Senior Leadership Team

Core Requirements

- Adhere to and promote the University's policies on Equality, Diversity and Inclusion and Information Security.
- Ensure compliance with Health & Safety and Data Protection Legislation;
- Responsible for Business Continuity and Emergency Response planning
- Support and promote the University's Sustainability policies, including the Carbon Management Plan, and carry out duties in a resource efficient way, recognising the shared responsibility of minimising the university's negative environmental impacts wherever possible;

Additional Requirements:

Undertake any other duties as requested by the VC or their line manager, commensurate with the grade.

This is a professional, demanding role within a complex organisation with an ambitious strategic plan and agenda for change. The role holder will be expected to show flexibility in working arrangements, including working hours, to ensure that professional services deliver the required level of service.

Person Specification

Essential

Experience

- Substantial experience of leading and developing a business intelligence team
- Substantial experience of business/strategic planning preferably in a Higher Education context
- Leading and implementing complex strategic projects, working collaboratively across multidisciplinary teams
- Successfully leading on business planning at strategic level
- Demonstrable ability to develop, utilise and achieve strategic key performance indicators
- Production of strategic management information reports and presenting to committees and senior stakeholders
- Delivering enterprise dashboard reporting
- Demonstrable experience of developing and delivering planning and performance service provision to support strategic decision making
- Proven ability to lead and influence a range of internal and external stakeholders

Knowledge and Skills

- Strategic awareness of the Higher Education environment and policy framework with an ability to scan the horizon
- Excellent influencing, communication, and negotiation skills
- Highly developed organisational and project management skills
- Excellent analytical skills, including the ability to recommend practicable courses of action based on a sound, robust analysis of data and information
- Clear understanding of change management principles
- Exceptionally well organised, able to manage competing and changing priorities in a large complex organisation with multiple stakeholders
- Lead, manage and develop individuals and teams
- Ability to detect and resolve conflict

Qualifications

- Bachelors degree or relevant professional qualification at graduate level (chartered where appropriate)

Personal attributes

- An outstanding communicator with strong interpersonal skills
- Ability to build collaborative and supportive relationships
- Agile in thinking and adaptive to change with a creative, can do mindset that brings solutions not just problems
- Inquisitive outlook that is continuously seeking new insights and better ways to do things.
- Ability to work as a team player while leading, motivating, and developing staff
- Ability to act as that critical friend to achieve positive outcomes
- Has integrity and builds trust
- Excellent organiser with ability to manage competing priorities without missing critical deadlines
- Strong empathy with the University's mission and values
- Proactive, self-motivated, tenacious, and resilient



How to apply

Please note previous candidates need not apply

Are you a sharp business thinker and leader with a passion for Higher Education? We are looking for an individual who can take our strategic planning and business intelligence to new and innovative heights, making a real difference to the continued success of the University.

Reporting to the Chief Financial Officer, the Director of Strategic Planning and Business Intelligence will be pivotal in leading strategic planning and the provision of business intelligence that will underpin organisation strategy and student success. They will work with senior stakeholders to influence decision making by explaining and advising on market and business intelligence insights. They will be outcomes focused, understanding what strategic and business approaches will drive the University's continuing success. An agile and creative thinker and collaborative influencer, the successful candidate will be a first-class communicator with a passion for the Higher Education Sector. The individual will be committed to ensuring the University of Greenwich continues to deliver an excellent experience to our students, staff and wider communities. They will want to work within an inclusive and collaborative team, have the capacity to innovate and be able to inspire others to achieve in a changing and complex environment.

The University of Greenwich is a special place because of our commitment to transforming lives through inspired teaching and research and the energy and enthusiasm of our students and staff. We are proud of our history as an educational institution which provides opportunities for people of potential, regardless of background, and which enhances society through research and enterprise.

We are proud of our heritage and our reputation as a diverse, multi-stakeholder institution with two London-based campuses and one at Medway in Kent,

working closely with several local and international colleges to build partnerships that support students. We have invested over £175 million since 2013 in laboratories, teaching spaces and student facilities. We have, amongst others, a new Student Hub at our Medway Campus, the Dreadnought Building, Stockwell Street Library and the School of Design at our Greenwich Campus. We have ambitious plans for all our campuses redefining our buildings and creating new spaces for learning and leisure for our students.

This is an exciting time to join us. For more information, please review the full job description, candidate specification and details of how to apply, by clicking on the following link:

<https://jobs.gre.ac.uk/2382-E>

Should you wish to have an informal conversation regarding this post, please contact the Chief Financial Officer, Louise Watson at **L.Watson@greenwich.ac.uk**

Should you have any queries regarding the application process, please contact the HR Recruitment Team at **HR-Recruitment@gre.ac.uk**

Longlisted candidates will be invited to a first stage discussion on either 24 or 25 September 2020. Those shortlisted will be invited to a selection centre on 1 October 2020 and a formal panel interview on 8 October 2020.

Salary circa £75k to £85k. More may be available for an exceptional candidate.

We are under-represented by BAME colleagues at this level and would encourage and welcome applications from BAME candidates.

We are looking for people who can help us deliver our mission of transforming lives through inspired teaching and research, through our **values**.